

**MANROSE**<sup>®</sup>  
DESIGNER SERIES

**CONTOUR**  
SYSTEM 200

**Configurable  
Fascia & Duct Connection  
Solution**



**Manrose Contour System 200**

the new standard in stylish, easy to install, configurable extract fascia systems



### Form and Function

Introducing the all new Manrose Contour modular fascia and extract adaption system – the configurable bathroom ventilation extraction system that features modular fascias for rapid and reliable attachment to the Contour ceiling plenum or duct adapter unit.

The range is designed to be used with Manrose in-line fans and accessories – like the Hyper150, Mixflo or Blue Jet fans (sold separately).

The Contour System 200 range includes white and black Fascias in round or square, as well as these items with LED light panels that include the SELV LED driver.

The LED light panel range includes a quick connect plug-in driver with pre-fitted plug and lead and energy saving IP44 wet-area safe SELV LED lighting.

The low installation depth, and side ducted design makes installing in tight spots like multi story applications possible.

### Contour Range Features

- Stylish slim line design
- Super low profile
- Available in white or black
- 10w LED Light panel options including driver with quick connection 12V plug and pre-fitted 240V supply lead and plug
- Choice of 150mm duct connecting ceiling plenum with 90° moulded plastic elbow outlet and backflow preventer for unimpeded airflow, OR adapter unit
- Fascias are easy to install, remove and clean
- 5 year warranty

### Configure to Suit

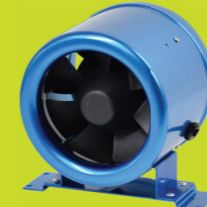
#### Step 1: Choose an inline fan and 150mm ducting



Hyper150 Fan FAN0085  
(order separately)



Mixflo Fan FAN1006  
(order separately)



Blue Jet Fan FAN6960  
(order separately)

#### Step 2: Choose a duct connector



Contour Ceiling Plenum  
- 150mm Low Profile

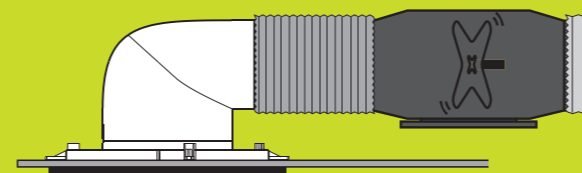


Contour Adapter Unit  
- 150mm

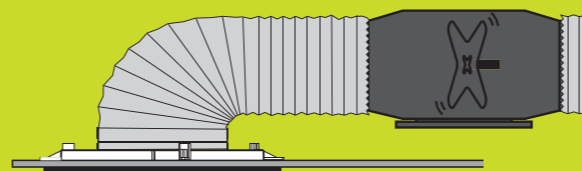
#### Step 3: Choose a fascia



### Configured Solutions



with Ceiling Plenum - 150mm Low Profile

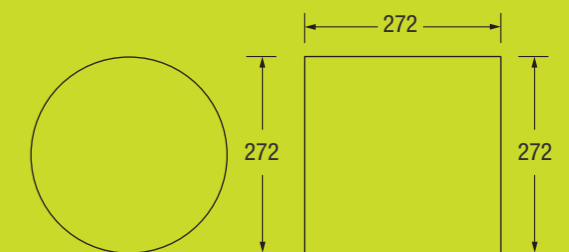
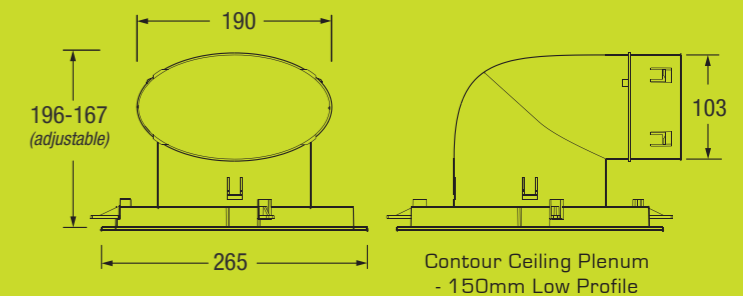


with Adapter Unit - 150mm

### Product Codes

DCT4500	Adapter Unit - 150mm
DCT4501	Ceiling Plenum - 150mm Low Profile
DCT4502	Fascia - Round White
DCT4503	Fascia - Round Black
DCT4504	Fascia - Square White
DCT4505	Fascia - Square Black
DCT4506	LED Fascia - Round White
DCT4507	LED Fascia - Round Black
DCT4508	LED Fascia - Square White
DCT4509	LED Fascia - Square Black

### Dimensions (mm)



Contour Round and Square Fascias

### Technical Specifications - LED Fascias

Power	220-240V AC, 50Hz
LED	10W, 850lm, 4200K
Rating	IP44



5468

Complies with AS/NZS Standards  
Specifications are subject to change without notice.

# MANROSE®

Manrose leads the market in air movement and air extraction. Developed and designed to meet the specific application needs of the New Zealand market, Manrose fans perform to those exacting standards for the life of the product.

Manrose fans, fan kits and air movement accessories deliver elegance and innovation in reliable and durable solutions everytime.

Distributed by Simx Limited

PO Box 14347, Panmure, Auckland 1741, New Zealand

**p** +9 259 1660 | **e** enquiry@manrose.co.nz | **w** www.manrose.co.nz | **w** www.manrose.com.au

PUB1506 1905