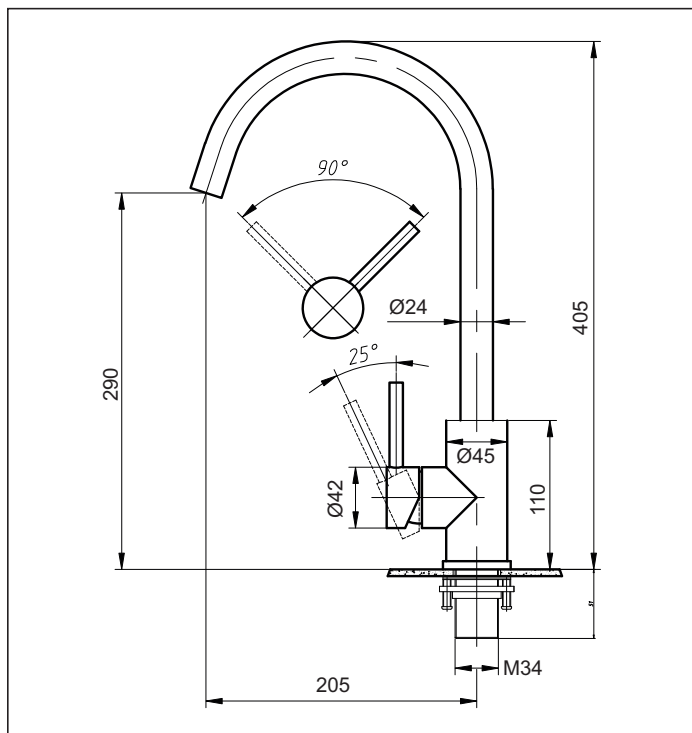


Deluna

Sink Mixer Gooseneck



Code: DE SM GNECK SS

Finish: Stainless Steel Brushed

Spout: Swivel 360°

Water Outlet: M24 ring with Aerator

Stainless Steel Inlet Hoses: Size: M10 x 1/2" BSP

Mounting Hardware: 34mm brass tube and backnut with 2x locking screws

Installation Hole Diameter:

Minimum: 34 mm

Maximum: 44mm

Max bench thickness: 40mm

Cartridge: Kerox 35K Flatbase

Flow: 8 l/min PCA fitted for regulated flow with mains pressure system

Max hot @ 35 kPa = 4.9 l/min

Suitable for mains pressure only

Recommended Operational Pressure Range: 150 - 600 kPa

Maximum Operating Temp: 80°C Never to Exceed: 1000 kPa



aquatica



KIWI OWNED COMPANY

NZ

• DESIGNED
• ASSEMBLED
• TESTED



Aquatica NZ Limited

9 Saunders Place,
Avondale, Auckland.

Tel: 09-828 2068,

Fax: 09-828 2069

Email: info@aquatica.co.nz

or visit our website:

www.aquatica.co.nz

© copyright Aquatica 2019