

caroma®

Caravelle 550

Vitreous China

Semi Recessed Vanity Basin

Nominal Size 550mm x 445mm

(Tapware is unavailable)

CI/SfB	(74.2)	g3	
Date			
March 2008			

Supersedes all previous issues

2.43.1

NEW ZEALAND



Caravelle 550

Vitreous China Semi Recessed Vanity Basin

Basin Size: 550mm x 445 mm (nominal)



A modern concept semi recessed vanity basin incorporating functional bowl surrounds with smooth rounded contours for easy cleaning and available in two sizes. The **Caravelle 550** is a generously sized basin with two soap holders and has been designed to co-ordinate with other products in the Caravelle range. The basin is suitable for general purpose domestic, commercial and disabled persons applications.

Tap Holes: Basin is available in: one taphole Code No.659710 and three tapholes Code No.659730.

Waste Outlet: The basin has been designed for the Caroma Uni-waste outlet suitable for a 40mm trap connection. Coloured plastic flush fitting Uni plug and waste supplied. For applications where a chrome plated brass waste is required there are four suitable Uni-wastes available in the following options — Flush Fitting Plug and Waste Code No.687140, Vandal Resistant Flush Fitting Plug and Waste Code No.687141, Covered Plug and Waste Code No.687142 and Vandal Resistant Covered Plug and Waste Code No.687143.

Bowl Capacity: 9 litres.

Overflow: Standard without overflow.

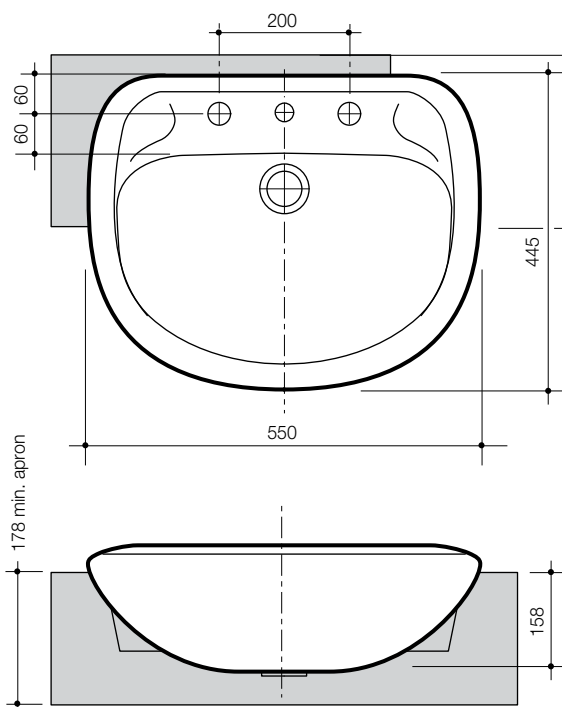
Fixing: **D.250 Bracket with Tie Hooks** – Supplied. Recommended for domestic and general commercial use. Two D.250 brackets are fixed to the underside of the counter top to secure the tie hooks which anchor the back of the basin to the counter.

The basin must be sealed to the top and front surface of the counter with an acetic cured silicone sealant. **Epoxy type glues must not be used.** The basin is supplied with a template which must be used for the counter top cut-out.

Important: For granite or marble tops, fix two 20mm thick wooden blocks in the bracket position on the underside of the granite/marble with fast setting two part epoxy. When fully set screw the brackets into position on the wooden blocks. Other suitable fastening systems maybe used.

Colours: White only.

Dimensions: All dimensions are in millimetres and are subject to normal manufacturing variations. Caroma pursues a policy of continuing improvement in design and performance of its products. The right is therefore reserved to vary specifications without notice.



Variable when using D.250 Tie Brackets.
Note: Local authorities have requirements for minimum basin to wall dimensions.

