

SP60D2FL/SP60D2FLM

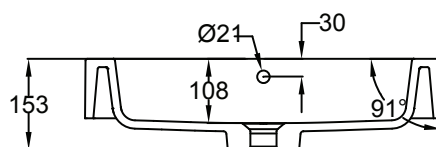
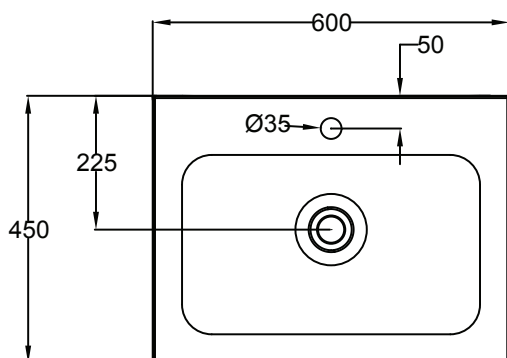
SPLASH

600, 2 DRAWER

vcboc
FOR BATHROOMS



Splash Basin



NB: Drawings indicate the technical measurements only and is not a reflection of how the unit will look.

SP60D2FL/SP60D2FLM SPLASH 600, 2 DRAWER

- Dimensions - W 600mm H 900mm D 450mm
- Polymarble top. Polymarble is a composite product and is very durable.
- Also available as a wall unit.
- Paint - The paint used on our products is polyurethane or UV based. It is five times harder and more durable than lacquer finishes. White only.
- TIMBER EFFECT (Melamine)- Our woodgrain melamine is a low pressure laminate. Two colours are available Charred Oak and Driftwood.

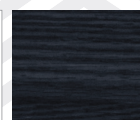
FINISHES



Driftwood



White



Charred Oak

SP60D2FL/SP60D2FLM

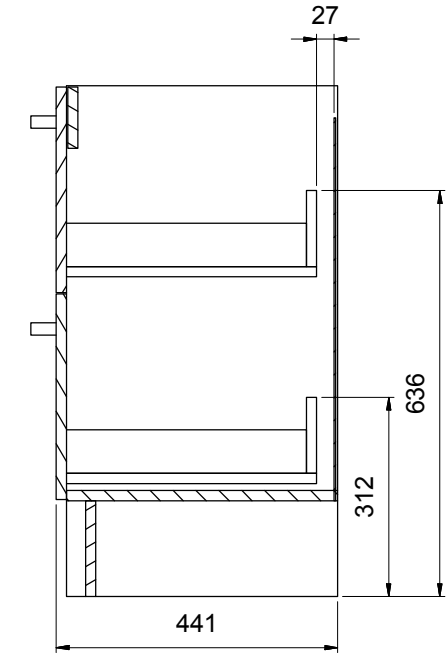
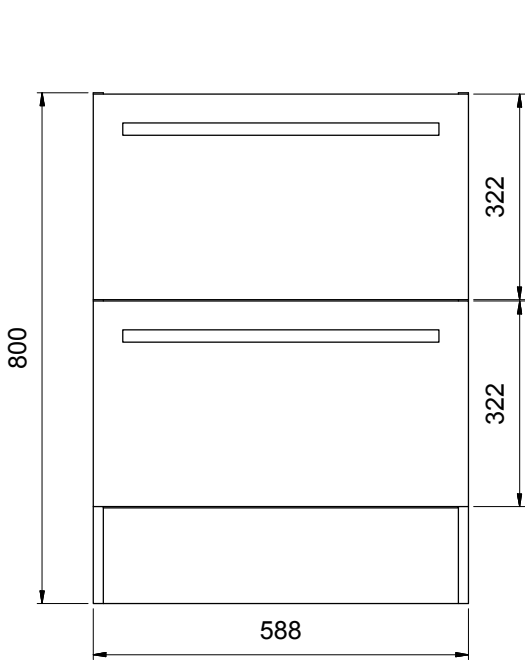
SPLASH

600, 2 DRAWER

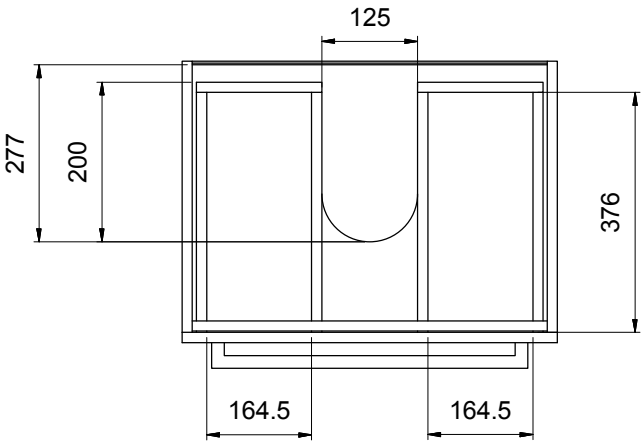
vcboc

F O R B A T H R O O M S

Splash Cabinet



SPLASH Floor Drawer Units Side View



SP60D2FL Top View Showing Drawers

NB: Drawings indicate the technical measurements only and is not a reflection of how the unit will look.