

## **SOUL** Slide Shower **VSU040**



Congratulations on your purchase of this high quality product from Voda Plumbingware.  
Please read the following before installation and retain (along with your receipt) for future reference.

### **TECHNICAL SPECIFICATIONS**

#### **Suitable for All Pressures**

Minimum Pressure = 35kPa

Maximum operating Pressure = 500kPa

Maximum operating Temperature = 65 deg. Celsius

For domestic use only.

### **CONFIGURATION**

Mains Pressure systems Install the flow restrictor as shown in the restrictor pack. This will comply with the Mains pressure WELS rating.

Unequal Low Systems Install as supplied.

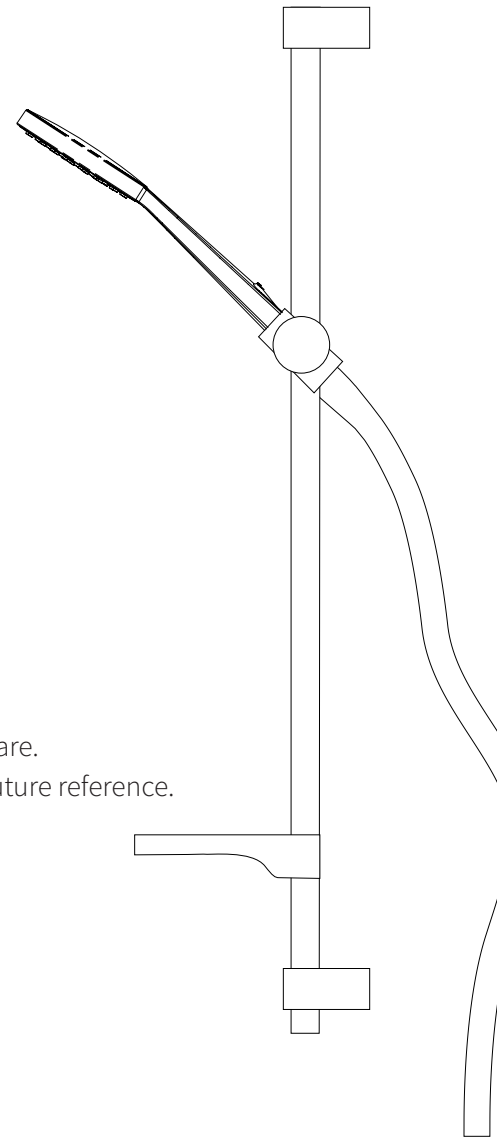
Equal Low systems Install as supplied.

### **INSTALLATION**

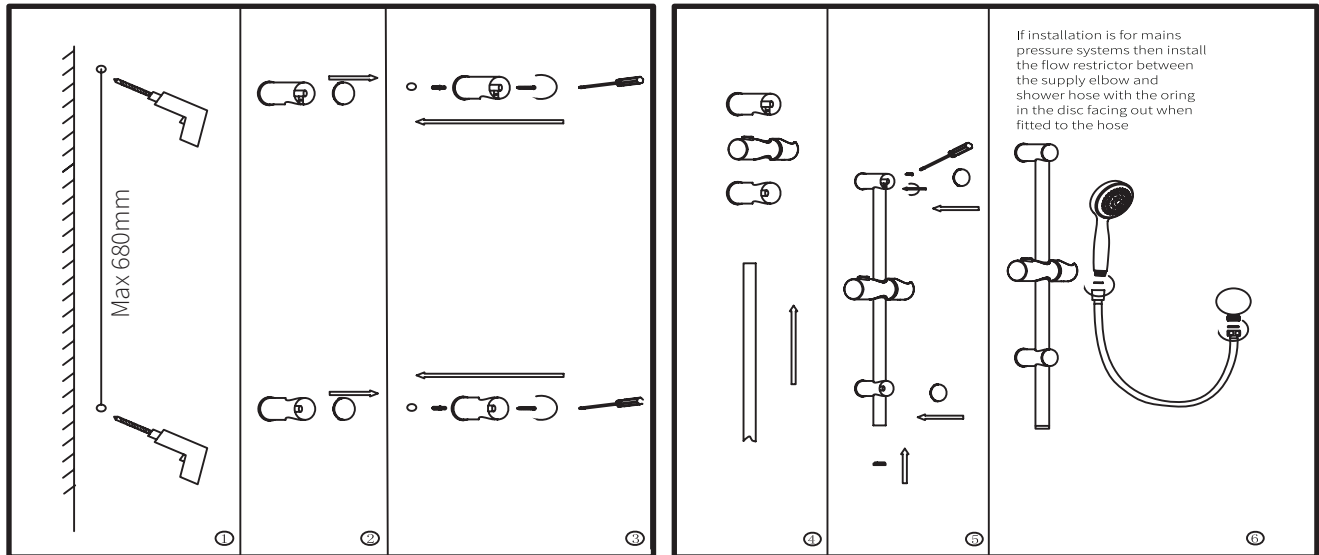
**CAUTION: If using your own screws to install the wall brackets, DO NOT use counter sunk type screws as this will void the warranty.**

**For pressures exceeding 500kPa install a pressure reducing valve. Failure to do so may void the warranty.**

- See diagram overleaf, steps 1-6.



ATTACH PROOF OF PURCHASE HERE



- Insert rose and attach hose with conical end to the rose.
- Attach the supply elbow to the supply connection on the wall.
- Turn on water supply. Check for leaks.

#### WARRANTY

Please refer to our website for warranty information: [www.vodaplumbingware.co.nz/warranty](http://www.vodaplumbingware.co.nz/warranty)

In the unlikely event that this product fails during its warranty period, phone our Customer Service team immediately on 0508 367 366 – as unauthorised removal of the product may void the warranty.

#### CARE AND MAINTENANCE

When cleaning your Voda product (including chrome, stainless steel, coloured or any other surface coating) you must not use any type of astringent, abrasive or citric cleaners.

We recommend using only a soft, damp cloth and on occasion a mild soap solution. Try to avoid excessive scrubbing as this could cause damage and void your warranty.