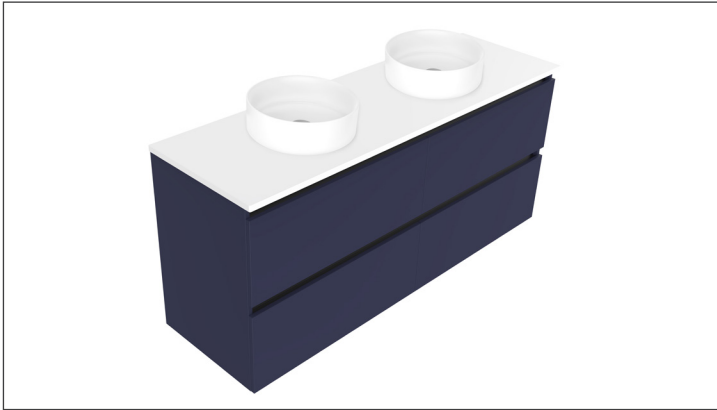


SPECIFICATION SHEET

Oxley Luxe 1500 4-Drawer Double Basin Wall Hung Vanity

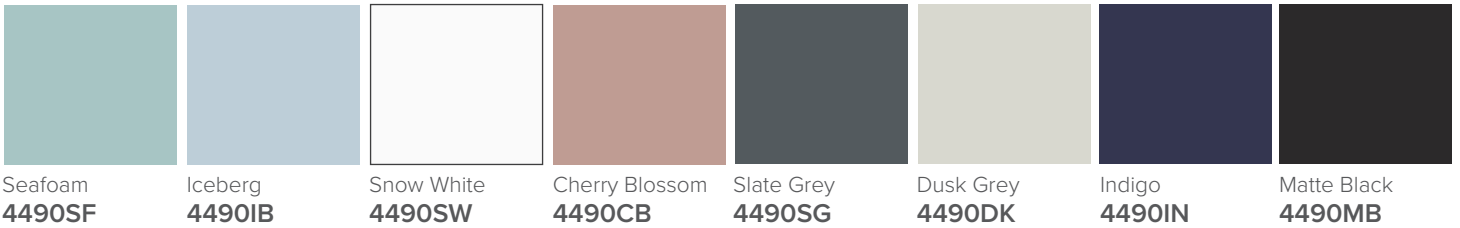


Features

- 4-Drawer Wall Hung Vanity - Colour options below
- Full Extension Soft Close Drawers with Extrusions - Extrusion upgrade options available
- Dimensions: H670 x W1500 x D465
- Slab Top Options:
20mm StoneCast Top or Quartz Slab Top

*Note: Vessel basins are purchased separately.
Visit www.newtech.co.nz for the full range of vessel basin options.*

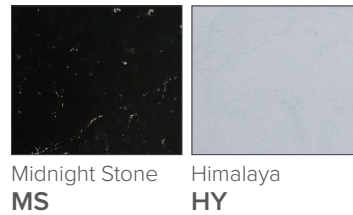
Cabinet Options



StoneCast Slab Top Options



Quartz Slab Top Options



Note: To order a Slab Top, add the Slab Top code to the cabinet code

Technical Details

Note: All measurements shown are in millimetres. Sizes are nominal.

