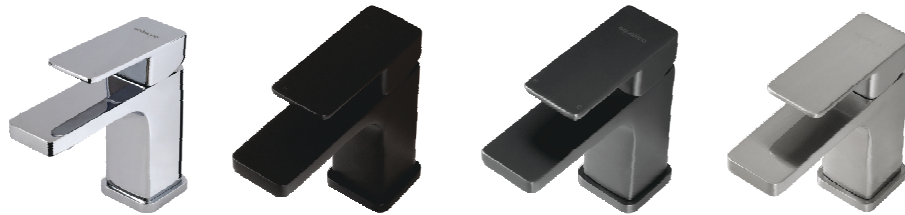
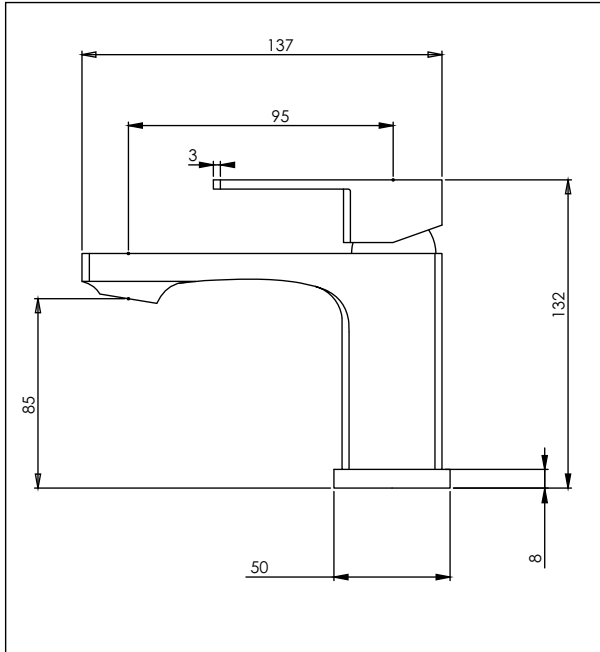


Mia2

Basin Mixer Swivel



Code: MI2 BASMSW | MI2 BASMSW BLK | MI2 BASMSW GM | MI2 BASMSW BN

Finish: Chrome | Black | Gunmetal | Brushed Nickel

Spout: 360° Swivel

Water Outlet: M24 cache Me

Stainless Steel Inlet Hoses:

Hot: I/D: Size: M12 x 1/2" BSP
Length: 400mm

Cold: I/D: Size: M12 x 1/2" BSP
Length: 400mm

Base plate supplied with custom flat seal

Mounting Hardware: Stud: 28mm brass tube and backnut with 2x M5 locking screws
Horseshoe washer

Max Bench Thickness: 48mm

Installation Hole Diameter: Minimum: 28mm
Maximum: 32mm

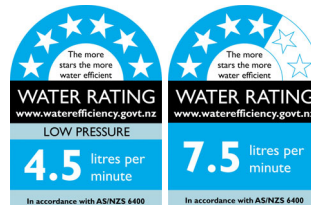
Cartridge: Kerox 25mm Flat base

Flow Control: 7 l/min PCA fitted for regulated flow with mains pressure system

Max hot @ 35kPa = 4.2 l/min

Suitable for low/unequal & mains pressure systems

Recommended Operational Pressure Range: 35 - 600 kPa
Maximum Operating Temp: 80°C Never to Exceed: 1000 kPa



aquatica



KIWI OWNED COMPANY

NZ • DESIGNED
• ASSEMBLED
• TESTED

Aquatica NZ Limited

9 Saunders Place,
Avondale, Auckland.
Tel: 09-828 2068,
Fax: 09-828 2069
Email: info@aquatica.co.nz
or visit our website:
www.aquatica.co.nz

© copyright Aquatica 2019