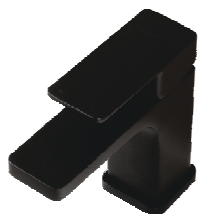
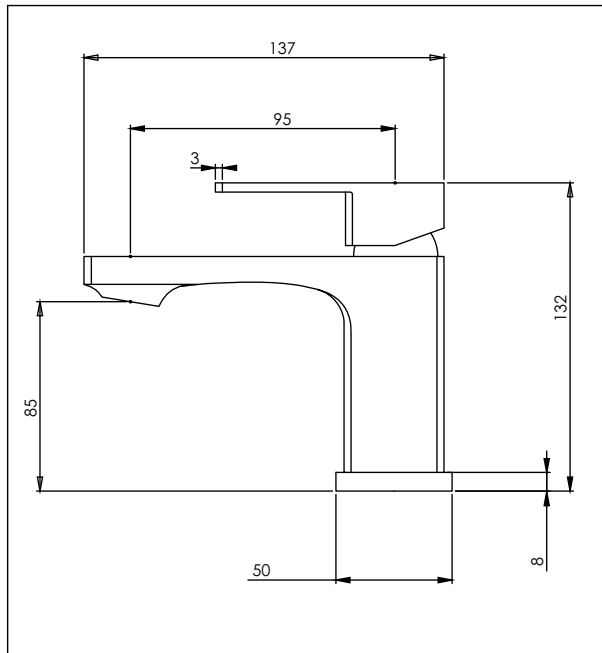


# Mia2

## Basin Mixer



**Code:** MI2 BASMAP | MI2 BASMAP BLK | MI2 BASMAP GM | MI2 BASMAP BN

**Finish:** Chrome | Black | Gunmetal | Brushed Nickel

**Spout:** Fixed

**Water Outlet:** M24 cache Aerator with PCA supplied

**Stainless Steel Inlet Hoses:**

Hot: I/D: Size: M12 x 1/2" BSP  
Length: 400mm

Cold: I/D: Size: M12 x 1/2" BSP  
Length: 400mm

Base plate supplied with custom flat seal

**Mounting Hardware:** Stud: 1 x 8mm  
Nut: 11mm AF  
Horseshoe washer

**Max Bench Thickness:** 40mm

**Installation Hole Diameter:** Minimum: 28mm  
Maximum: 35mm

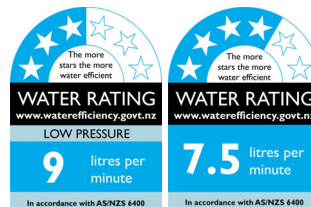
**Cartridge:** Kerox 35mm Raised base high O-ring

**Flow Control:** 7 l/min PCA supplied for regulated flow with mains pressure system

Max hot @ 35kPa = 6.8 l/min

**Suitable for low/unequal & mains pressure systems**

Recommended Operational Pressure Range: 35 - 600 kPa  
Maximum Operating Temp: 80°C Never to Exceed: 1000 kPa



**KIWI OWNED COMPANY**



**Aquatica NZ Limited**

9 Saunders Place,  
Avondale, Auckland.  
Tel: 09-828 2068,  
Fax: 09-828 2069  
Email: info@aquatica.co.nz  
or visit our website:  
**www.aquatica.co.nz**

© copyright Aquatica 2019