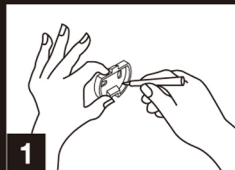




Kip Towel Ring

Installation Instructions



1

Step 1

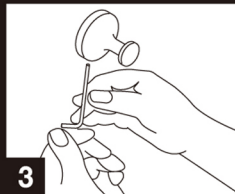
Place the mounting bracket against the wall in the desired position, then mark & drill fixing holes.



2

Step 2

Fully insert the appropriate screw plug* supplied and affix the mounting bracket using screws supplied.



3

Step 3

Place the base of accessory on mounting bracket and tighten grub screw(s).



***Solid walls**

Ø 6 mm

40 mm depth



***Tiled cavity walls**

Ø 8 mm

Toggle bolts (not supplied) should be used for untiled cavity walls.