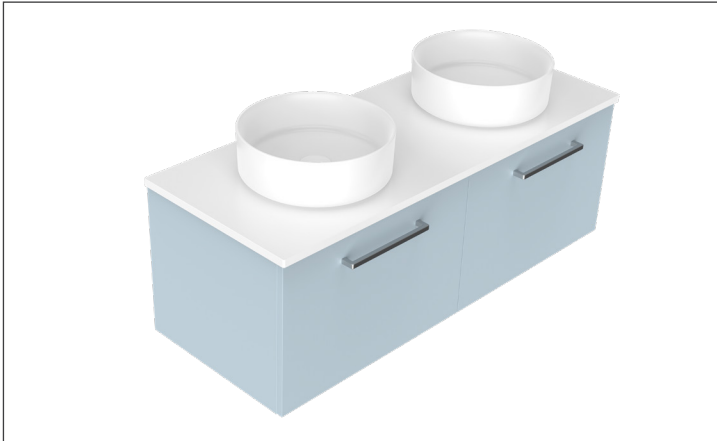


SPECIFICATION SHEET

Harrow Luxe 1200 2-Drawer Double Basin Wall Hung Vanity

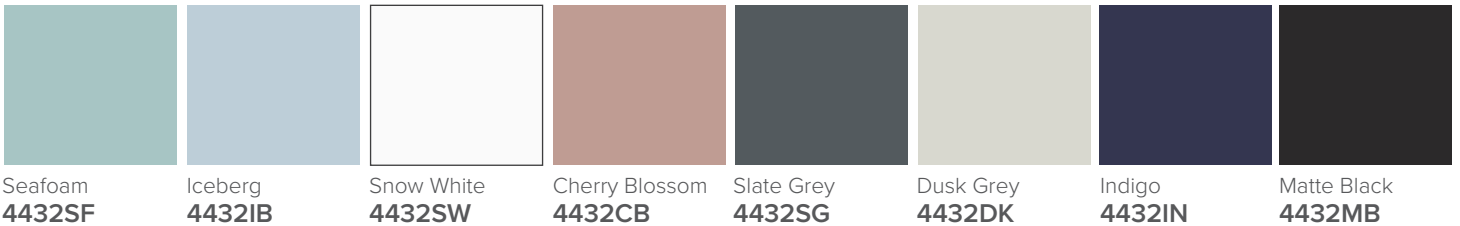


Features

- 2-Drawer Wall Hung Vanity - *Colour options below*
- Full Extension Soft Close Drawers with Handles - *Handle upgrade options available*
- Dimensions: H420 x W1200 x D465
- Slab Top Options:
20mm StoneCast Top or Quartz Slab Top

*Note: Vessel basins are purchased separately.
Visit www.newtech.co.nz for the full range of vessel basin options.*

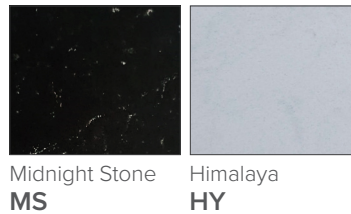
Cabinet Options



StoneCast Slab Top Options



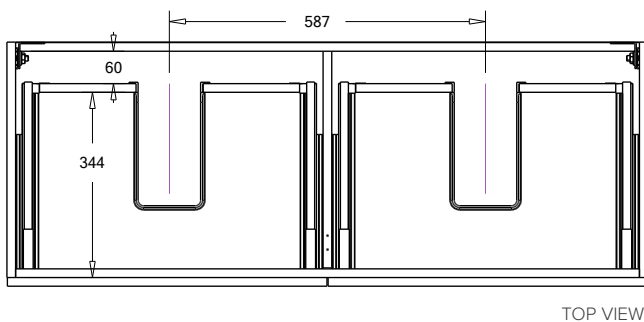
Quartz Slab Top Options



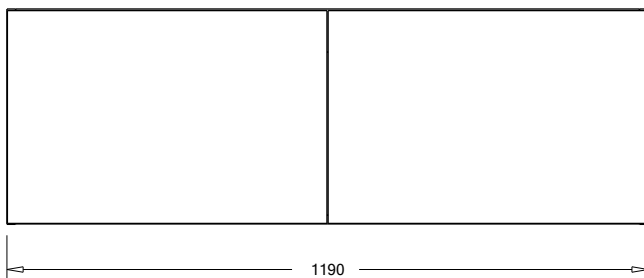
Note: To order a Slab Top, add the Slab Top code to the cabinet code

Technical Details

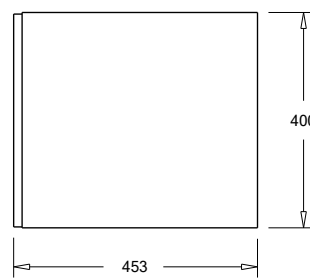
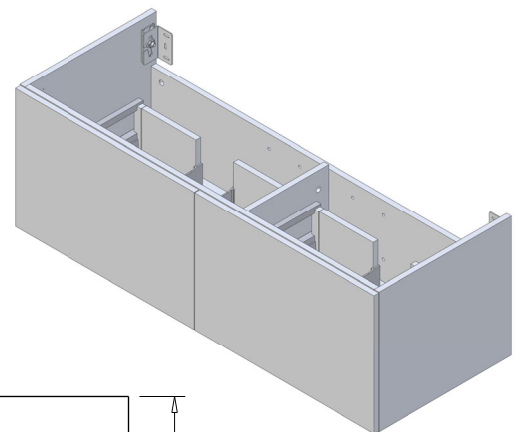
Note: All measurements shown are in millimetres. Sizes are nominal.



TOP VIEW



FRONT VIEW



SIDE VIEW