



Trusted in New Zealand Since 1982

# INSTALLATION GUIDE

**QUICK-FIT®**  
ACRYLIC SHOWER TRAY

## 1. Before installing Shower Tray

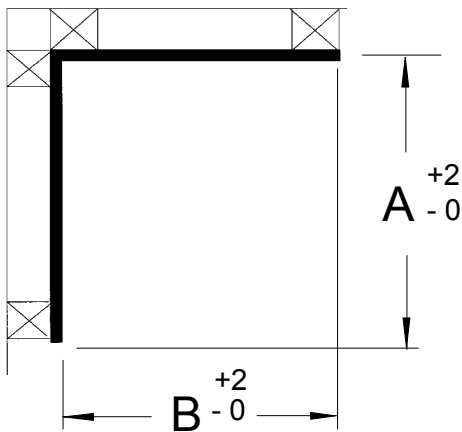
When installing an Englefield shower wall ensure that the walls are constructed in accordance with one of the following illustrations.

Measure back and side walls. The dimensions of the shower area must be within range shown below.

Ensure a stud is located as shown (dimensions A or B or C) to provide a solid support for the door and return panels.

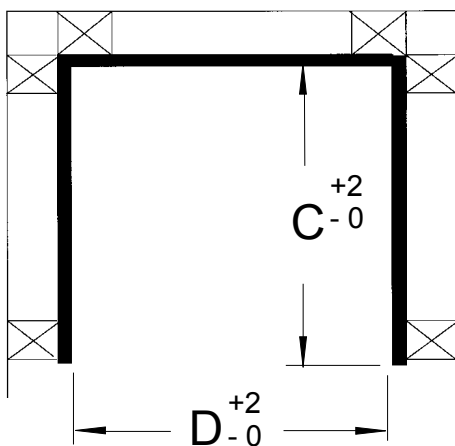
**Note:** Dimensions are to finished surface of approved wallboard.

### Two Sided Wall



SHOWER TRAY	A	B
900 X 750	739	879
900 X 900	879	879
1000 X 1000	984	984
1200 X 900	886	1175

### Alcove Wall



SHOWER TRAY	C	D
900 X 750 X 900	885	747
750 X 900 X 750	739	864
900 X 900 X 900	879	864
1000 X 1000 X 1000	984	964
900 X 1200 X 900	879	1164

APPROVED ADHESIVE: Sika shower bond

Usage : 3 cartidges for 2 sided shower wall liners,  
4 cartidges for 3 sided shower wall liners.

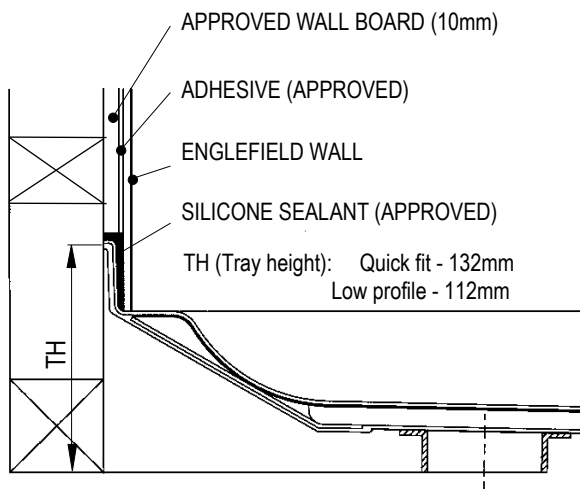
APPROVED SEALANT: Sika Sikasil NG (Arctic White)

## 2. Install shower tray

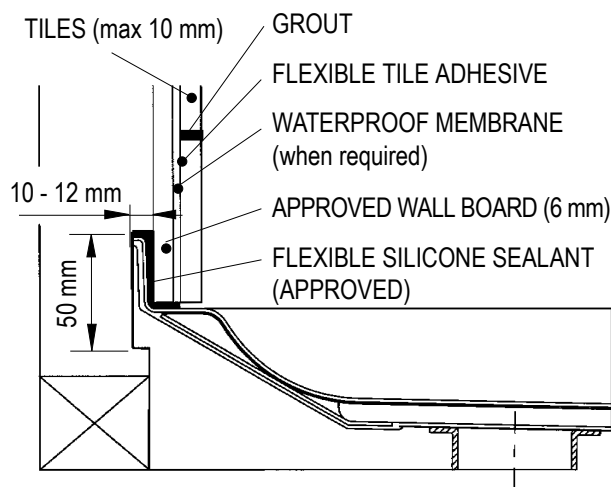
Install the shower tray in accordance with one of the following recommended methods of installation. Fig A, B or C.

**IMPORTANT:** Shower tray must be installed level!

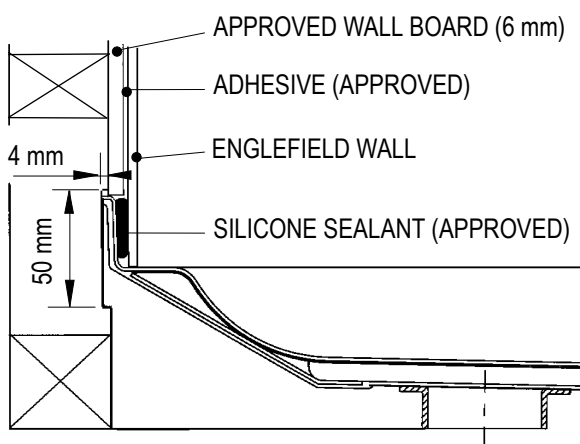
**Fig. A - Approved wall board / Englefield wall**



**Fig. B - Approved wall board / Tiles**



**Fig. C - Approved wall board / Englefield wall**



### WARNING

**BASE MUST BE FULLY SUPPORTED. FAILURE TO COMPLY VOIDS WARRANTY.**

When installed on a wooden floor, floor board should be supported at not greater than 500 mm centres and the cut-out waste for waste connection kept to a minimum.

Many tradesmen prefer to install bases on a weak cement slurry (approx. 10:1 sand and cement) thus ensuring complete support over the entire load bearing area. However this step is not necessary providing that installation is on a flat, level surface free of bumps and protrusions

When installed on a concrete slab floor, chases or channels left for plumbing must be completely backfilled. Because Building requirements can vary from area to area, Local Authority regulations must be checked prior to installation.

## 3. Install Duracryl® Shower Wall

Follow instructions supplied with Wall.

## 4. Waste fitting installation

Follow instructions supplied with the waste.

**INSTALLATION COMPLETE**